



5 Danson Mews, London, SE17 3FP

25% Share of Ownership - Beautifully presented one double bedroom garden apartment in contemporary development, a short stroll from Elephant & Castle and Kennington underground stations, as well as a plethora of local amenities round the corner.

The property boasts a generous open plan living area leading into the spacious private garden ideal for alfresco dining and entertainment, a contemporary kitchen with all mod cons, a double bedroom with plenty of storage space, and a stylish bathroom.

Leasehold - Share of Ownership

Monthly rent: £449.49

Service charge: £1211.16 per annum

Ground rent: £249.96 per annum

243 years left on the lease

Council Tax Band D

Figures may vary. Please double check all figures with your conveyancer.

- Recently Built Development
- Private Garden
- Contemporary One Double Bedroom Apartment
- Open Plan Kitchen
- Naturally Bright
- Close to Elephant & Castle and Kennington Underground Stations
- Tranquil Residential Cul-de-sac
- SHARE OF OWNERSHIP 25%

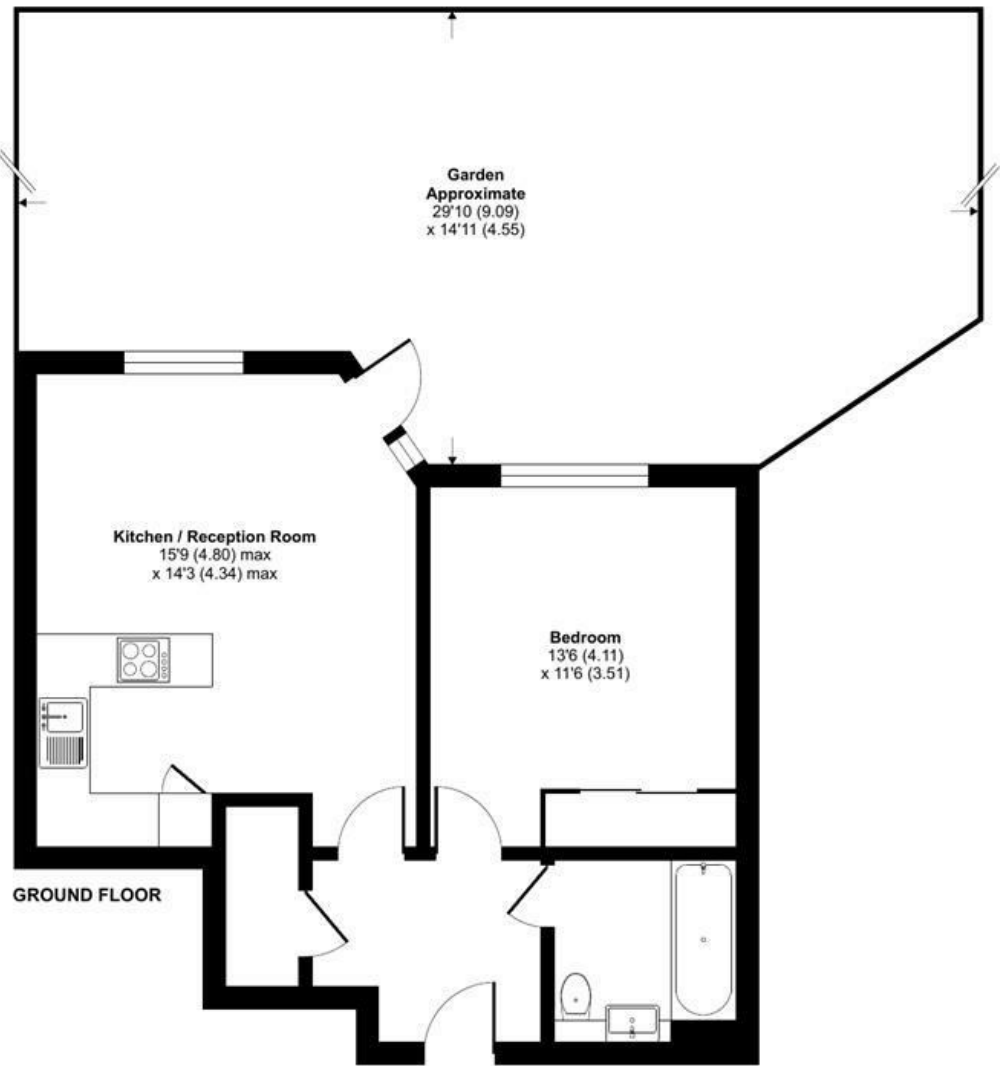
Alex & Matteo
ESTATE AGENTS

£125,000

Danson Mews, London, SE17

Approximate Area = 537 sq ft / 50 sq m

For identification only - Not to scale



Alex & Matteo
ESTATE AGENTS



**Certified
Property
Measurer**

Floor plan produced in accordance with RICS Property Measurement Standards incorporating International Property Measurement Standards (IPMS2 Residential). © nitchcom 2023. Produced for Alex & Matteo Estate Agents. REF: 939139

Energy Efficiency Rating		
	Current	Potential
Very energy efficient - lower running costs		
(92 plus) A		
(81-91) B	85	85
(69-80) C		
(55-68) D		
(39-54) E		
(21-38) F		
(1-20) G		
Not energy efficient - higher running costs		
England & Wales		
	EU Directive 2002/91/EC	